



LOVE

22nd APFA AWARDS & RECOGNITION BANQUET
PHILADELPHIA, PA

APFA NATIONAL OFFICERS



APFA National President
Laura Glading



APFA National Vice President
Marcus Gluth



APFA National Secretary
Jeff Pharr



APFA National Treasurer
Greg Gunter

Dear Flight Attendants and Friends,

It is our great pleasure to welcome you to the 2015 APFA Awards and Recognition Banquet!

We are very happy you are able to be a part of this year's special event. Your hard work and generous support makes this annual gathering possible. Thank you for all that you do on behalf of the APFA membership!

We also want to thank our host city of Philadelphia. This year's APFA Convention is the first that we have organized with the help of our new members from Legacy US Airways, so it is altogether fitting that it is taking place in the City of Brotherly Love.

In addition, we want to welcome our new colleagues on the APFA Board of Directors, the Base Presidents, as well as the Vice Presidents, of CLT, DCA-US, PHL and PHX. Like our company, APFA has undergone tremendous growth. As with any period of change, it has come with challenges and opportunities. We thank the APFA Leadership, and the entire APFA Membership, for their support and guidance as we navigate these challenges, and look forward to seizing all of the available opportunities together.

This evening, APFA will be honoring very deserving recipients of three of our union's most prestigious awards. The Edward M. Kennedy Award is presented for public service on behalf of the labor movement and our 2015 recipient is the Honorable Joshua Gotbaum, the former director of the Pension Benefit Guaranty Corporation. The Cindy Horan Humanitarian Award will be presented to Flight Attendant Susie Wallace for her service above and beyond the call of duty. Finally, Flight Attendants Bill Ibarra, Vance Spurgeon, and Patricia Hodges will be presented with the Jose Chiu Award. Sadly, they will also accept a posthumous award on behalf of our fallen colleague, Flight Attendant Deanna Bethea.

Tonight APFA also welcomes two honorary members Lorie Gebbie & Mischelle Copeland from Copeland, Gebbie & Horton Financial Consulting Group. Many thanks to both for their years of guidance to keep APFA financially sound.

Finally, we extend our sincerest appreciation to the sponsors of tonight's banquet listed in the back of this program. Their generous donations help make this evening a success.

Thank you for all the work that you do on behalf of the Flight Attendants of American Airlines. Welcome and enjoy the banquet!

In Unity,



Laura Marcus Jeff Gary

TABLE OF CONTENTS

Photo Collage..... 5

★ Edward M. Kennedy Award 6

Cindy Horan Humanitarian Award 8

Jose Chiu Award..... 10

Honorary Membership 12

Sponsors 14



Kim Coats (IDF), Cathie Ong (sister of Betty Ong), Brenda McKenzie (DFW), Nat. Communications Chair Leslie Mayo, APFA Historian Sally Prater & Jennifer Brissette (IDF)



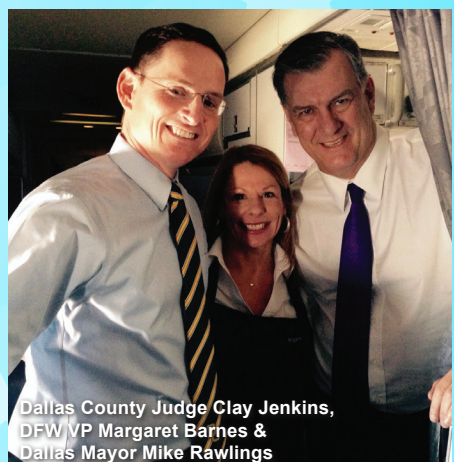
DCA-AA Pres. Robert Valenta, DCA-AA VP Tim Weston, & Govt Affairs Specialist Julie Frederick at the Congressional Gold Medal Ceremony, Emancipation Hall, U.S. Capitol.



DFW Pres. Chris O'Kelley & DFW VP Margaret Barnes



Dan Sampey (PHL) & DCA-US Pres. Dianne Britton



Dallas County Judge Clay Jenkins, DFW VP Margaret Barnes & Dallas Mayor Mike Rawlings

EDWARD M. KENNEDY AWARD FOR PUBLIC SERVICE 2014

AWARDED TO THE HONORABLE JOSHUA GOTBAUM



The Honorable Joshua Gotbaum just completed four years as Director (CEO) of the Pension Benefit Guaranty Corporation. PBGC has 2,300 employees, an investment portfolio in excess of \$80 billion, and insures pension plans covering more than 40 million people.

Josh focused PBGC on preserving pensions, not just waiting until they fail. One of his most visible successes was at American Airlines, where the pensions of 130,000 people were saved. Another was the bipartisan Multi-employer Pension Reform Act of 2014 that will preserve pensions of some 1,500,000 people.

Gotbaum has been a forceful advocate for reforming pension plans, expanding retirement options, and for strengthening retirement security generally. In 2013 *Institutional Investor* magazine cited Mr.

Gotbaum as one of the 40 most influential players in the battle to decide the future of U.S. pensions.

For more than three decades, Mr. Gotbaum has worked in business, government and non-profits. In 2001-2002, he was the first CEO of The September 11th Fund, a charity that used more than \$500 million in contributions to help more than 100,000 people, non-profits, and small businesses affected by the attacks. From 2003-2005, he led and managed the successful reorganization of Hawaiian Airlines as its Chapter 11 trustee. Hawaiian exited Chapter 11 as one of the most profitable airlines in America, its creditors were fully repaid, its reorganization was awarded the transaction of the year by *Airline Business* magazine, most of its union contracts included raises, and Josh was honored for his work by the IAM. Immediately prior to joining PBGC, he was a partner in Blue Wolf Capital, a private equity firm noted for its work with both government and unions. Before that, he was a partner/managing director with Lazard in New York and London. Among his clients were the United Steelworkers and ALPA.

During the Clinton administration, Josh served as Executive Associate Director and Controller in the Office of Management and Budget; Assistant Secretary of Treasury for Economic Policy; and as Assistant Secretary of Defense. During the Carter Administration he worked in the Department of Energy and on the White House staff.

Josh has degrees from Stanford, Harvard Law School, and Harvard's Kennedy School of Government. He is married and the father of three college students. In his spare time, he sings.

RESOLUTION: "JOSHUA GOTBAUM - KENNEDY AWARD NOMINATION"

Passed: 2.06.15 by the APFA Board of Directors

WHEREAS, the APFA Board of Directors created and is authorized to bestow the Edward M. Kennedy Award for Public Service on Behalf of the Labor Movement to honor individuals in the public or private sectors "in recognition and appreciation of their dedication and contribution to the protection and promotion of the rights of America's workers and their families and the work of unions to further those goals;" and

WHEREAS, Josh Gotbaum was the Director of the Pension Benefit Guarantee Corporation (PBGC) from 2010 to 2014, and currently is at The Brookings Institution as a Guest Scholar, Economic Studies; and

WHEREAS, as Director of the PBGC, Gotbaum was a forceful advocate for preserving pension plans whenever possible and for other actions to strengthen workers' retirement security; and

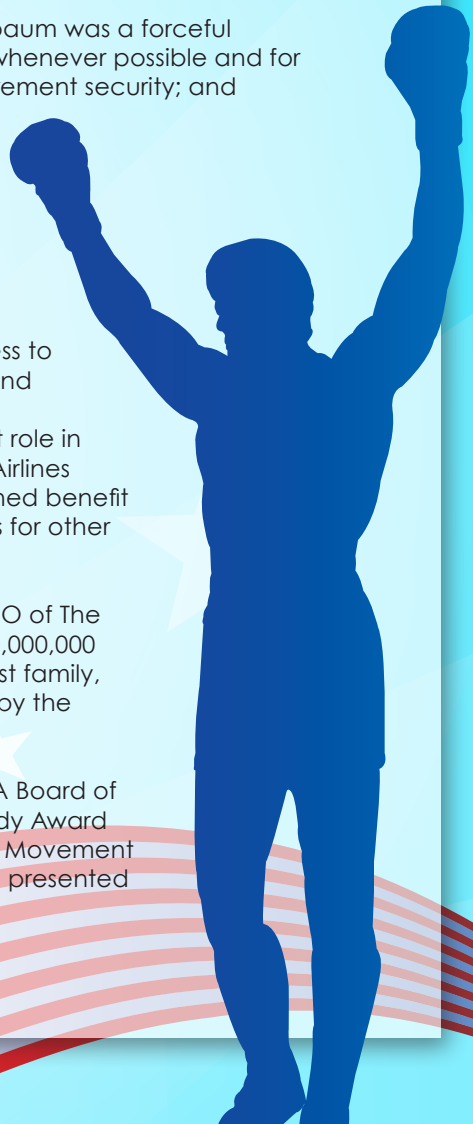
WHEREAS, the PBGC was a member of the Unsecured Creditors Committee during the AMR bankruptcy proceedings; and

WHEREAS, Gotbaum joined APFA in vigorously fighting to prevent American Airlines from using the bankruptcy process to shed its defined benefit pension plans; and

WHEREAS, Gotbaum played a significant role in keeping the bankruptcy-era American Airlines management from terminating the defined benefit plan for Flight Attendants (and the plans for other workgroups); and

WHEREAS, Gotbaum also was the first CEO of The September 11th Fund, a more than \$500,000,000 charitable organization designed to assist family, institutions, and communities impacted by the September 11th attacks;

THEREFORE BE IT RESOLVED, that the APFA Board of Directors bestows the Edward M. Kennedy Award for Public Service on Behalf of the Labor Movement on Josh Gotbaum, with the award to be presented at the next Annual Convention.



CINDY HORAN HUMANITARIAN AWARD AWARDED TO SUSAN D. WALLACE



Susie Wallace is a forty-four year Flight Attendant with American Airlines and is based in JFK. She works at both a base and national level as an Employee Assistance Representative for APFA and is a Certified Employee Assistance Professional, CEAP. Susie has been a paramedic with the Washington Ambulance Association in Washington Connecticut for the past twenty years and is a Connecticut State EMS Examiner, a CPR Instructor and certified instructor for the ICSF foundation. Susie is the founder of the Peer

Support Program which will now be incorporated into the APFA CISM program.

In working with Susie over these past years, she has consistently demonstrated her willingness to go above and beyond the call of duty to assist our Flight Attendants. Not only is Susie knowledgeable about our EAP program, trauma and recovery, she brings to her work a compassionate demeanor and wise heart so that those whose lives she touches may find within themselves the courage to heal. Not only is Susie an amazing EAP Representative for our department but she is a remarkable person to offer her assistance and her ambulance's services to help Mary Ellen. In spite of my calling her at such a late hour, she picked up the phone and put her team together. Her willingness to get very little sleep to arrive early in the morning at JFK, her readiness to drop her personal plans on a Sunday and forfeit her day off to volunteer her time to assist a fellow crew member is commendable.

-Patty French, MA,LCPC,CADC,CEAP

RESOLUTION: CINDY HORAN HUMANITARIAN AWARD"

Passed: 2.06.15 by the APFA Board of Directors

WHEREAS, the APFA Board of Directors created and is authorized to bestow the Cindy Horan Humanitarian Award "to members who exhibit extreme acts of selflessness outside of the flight attendant workplace;" and

WHEREAS, on Friday, October 3, 2014, an American Airlines flight from JFK experienced severe turbulence close to final descent which seriously injured one of the Flight Attendants; and

WHEREAS, the injured Flight Attendant needed emergency medical transport and care upon arrival at JFK on Sunday, October 5 at 0800; and

WHEREAS, late Saturday night, October 4, APFA National EAP Chair Patty French learned that American Airlines medical would be unable to have an ambulance at JFK the following morning when the flight landed to transport the seriously injured Flight Attendant to the hospital for surgery; and

WHEREAS, at 2300 that Saturday night, Patty French called Susie Wallace, who is a JFK Flight Attendant, an APFA EAP REP, APFA CISM team member and a paramedic for her home town in Connecticut, to see if she might be able to provide any help; and

WHEREAS, despite the very late hour, Susie Wallace, acting as a paramedic, put together a crew and Medical Intensive Care Unit for a two-hour drive to be at JFK to meet the inbound flight and transport the Flight Attendant to Hartford Hospital two hours away for her emergency medical care; and

WHEREAS, Susie Wallace went above and beyond the call of duty to arrange for urgently needed care for an injured Flight Attendant;

THEREFORE BE IT RESOLVED, that the APFA Board of Directors bestows the Cindy Horan Humanitarian Award on Susie Wallace, with the award to be presented at the next Annual Convention.



LOVE

Jose Chiu Award 2014

"Recognizing APFA Flight Attendant members who have suffered serious injury or death in the course of an evacuation or aircraft emergency."

Awarded To:

Bill Ibarra

Deanna Bethea

Vance Spurgeon

Patricia Hodges



RESOLUTION: JOSE CHIU AWARD NOMINATIONS

Passed: 2.06.15 by the APFA Board of Directors

WHEREAS, the APFA Board of Directors created the Jose Chiu Award to recognize APFA Flight Attendant members who have suffered serious injury or death in the course of an evacuation or other aircraft emergency; and

WHEREAS, twenty-four years ago this week, on February 1, 1991, Flight Attendants Bill Ibarra, Deanna Bethea, Vance Spurgeon and Patricia Hodges were working US Air Flight 1493 from SYR to LAX; and

WHEREAS, the tower cleared the 737 to land on an LAX runway after it had cleared SkyWest Flight 5569 for takeoff on that same runway, and a horrific crash ensued; and

WHEREAS, with the aircraft engulfed in flames, the four Flight Attendants evacuated and saved the lives of as many of their passengers and crew as possible; and

WHEREAS, Bill Ibarra, Vance Spurgeon and Patricia Hodges survived with serious injuries that took years to heal, while Lead Flight Attendant Deanna Bethea was one of the twenty-one people who perished that day, including US Air Captain Colin Shaw and all 12 souls on board SkyWest Flight 5569; and

WHEREAS, years have passed, and today Bill Ibarra is an integral part of APFA's Critical Incident Stress Management (CISM) Program, and assists his fellow Flight Attendants who have been involved in traumatic events in the workplace and is a shining example of human resilience in the face of tragedy; and

WHEREAS, APFA wishes to recognize, honor and express our gratitude to all four Flight Attendants for their remarkable courage and bravery;

BE IT THEREFORE RESOLVED, that the APFA Board of Directors bestows the Jose Chiu Award upon Flight Attendants Bill Ibarra, Deanna Bethea (posthumously), Vance Spurgeon and Patricia Hodges.

Honorary Membership 2014

AWARDED TO MISHELLE COPELAND & LORIE GEBBIE



Mischelle Copeland



Lorie Gebbie

Mischelle Copeland

First Vice President – Investments

Mischelle began her career in the financial industry in 1979 with Republic National Bank of Dallas. Prior to joining Wachovia Securities, a predecessor firm of Wells Fargo Advisors, in 2006, she was with JP Morgan Private Client Services for 18 years. Mischelle believes in building strong relationships with her clients for generations with a foundation of integrity and trust.

Mischelle is a four year winner of the Five Star Wealth Manager Award. She was selected as a 2010, 2011, 2012 and 2013 Five Star Wealth Manager.

Lorie Gebbie

First Vice President – Investments

Lorie began her career in financial services in Wire Transfers and Investment Operations with Continental National Bank in 1980. She was with JP Morgan Private Client Services for almost 27 years before she moved to Wachovia Securities, a predecessor firm of Wells Fargo Advisors in 2006. Lorie is committed to recognizing her clients' needs and providing strategies with first class service and integrity.

Lorie is a three time winner of the Five Star Wealth Manager Award. She was selected as a 2011, 2012 and 2013 Five Star Wealth Manager.

Lorie Gebbie has been managing APFA's investments since 1996. She was joined by Mischelle Copeland in 2006 and have provided APFA with invaluable financial advice.

With the instrumental advice and money management provided to APFA by Lorie and Mischelle, our union has remained financially sound.

It is with great pleasure that we officially welcome Lorie and Mischelle into APFA by bestowing Honorary Membership upon them.

RESOLUTION: HONORARY MEMBERSHIP

Passed: 3.14.14 by the APFA Board of Directors

WHEREAS, Article II, Section 5.A.(2) of the APFA Constitution defines Honorary Members as *“Those members upon whom Honorary Membership has been conferred by the Board of Directors”*, and

WHEREAS, the APFA Policy Manual Section 2.G. (2) provides that *“A person shall be deemed an Honorary Member of the APFA by action of the Board of Directors”*, and

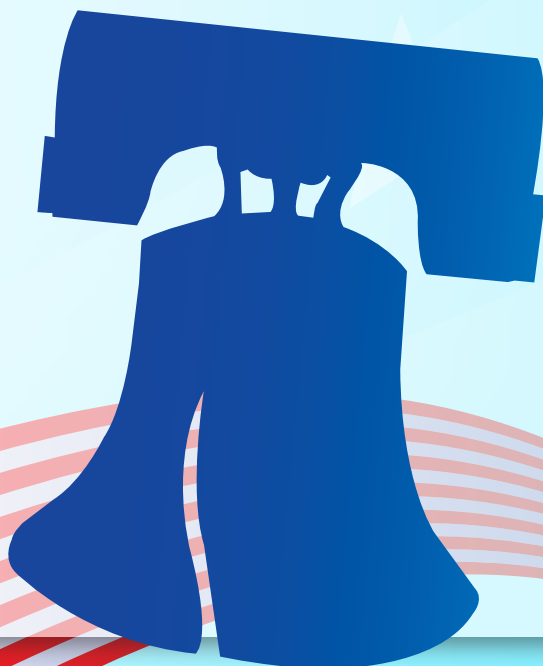
WHEREAS, Lorie Gebbie and Mischelle Copeland of Copeland Gebbie Horton Financial Consulting Group, a division of Wells Fargo Advisors, LLC, have played an enormous part in the financial security of APFA, and

WHEREAS, these professionals have consistently provided the APFA with exceptional counsel and financial advice, and

WHEREAS, their commitment and dedication has been unwavering, providing invaluable financial guidance throughout the years,

BE IT THEREFORE RESOLVED, that the APFA Board of Directors bestow upon Lorie Gebbie and Mischelle Copeland Honorary Membership in the APFA.

BE IT FURTHER RESOLVED, that their Honorary Membership status, although effective immediately, be officially celebrated during the 2015 Annual Convention.



Sponsors

HERO \$1,751 & ABOVE

Guerrieri, Clayman, Bartos & Parcelli, P.C.

Phillips, Richard & Rind, P.A.

CHAMPION \$1,001 ~ \$1,750

Akins & Associates

FRIENDS OF APFA ~ UP TO \$500

Wood, Stephens & O'Neil, LLP

Law Office of Alex Tandy

Anthony DeMaio - Honorary Member Class of 2013

APFA National Officers -

Laura Glading, Marcus Gluth, Jeff Pharr, Greg Gunter

APFA Regional Representatives -

Debbie Dent, Beth Flannery, Liz Geiss, Jennifer McCauley, Catt Napper

APFA Department Chairpersons -

Julie Frederick, Patty French, Kelly Gambello, Patrick Hancock,

Leslie Mayo, Jaimie McNeice, Brent Peterson, Sally Prater,

Catherine Sharp, Kelly Skyles



APFA Ad Hoc -

Lenny Aurigemma, Michelle Bernstein, Michelle Nasca, Kerstin Taylor,
Steve Watson

APFA National Ballot Committee -

Cindy Horan, Leatha Harding-Berry, Avis Rives, Tim O'Connell,
Kent McDougal

APFA Go Team & Cabin ASAP Members

APFA Former National Officers 1992-2000 -

Denise Hedges, Judy Ladislav, Kitty Solder, Michael Parker

"Congratulations to Laura and her team for successfully leading the APFA through such trying times."

Chicago Leadership

Susan Wroble, Todd Breckenridge, Brian Pinkowski, Todd Cesa

LaGuardia Leadership

Christian Casadey Santiago, Robert Norvell

San Francisco Leadership

Larry Salas, Julie Hedrick

Miami Leadership

Julie Moyer, Melinda Hill

Individuals

Jennifer Brissette
Brian Clark
Kim Coats
Jeffrey Ewing

Neil Fernandez
Patty French
Michael Medeiros
Amy Milenkovic

Katy O'Donoghue
Sally & Paul Prater
David Ransom
Catherine Sharp



THANK YOU FOR JOINING US THIS EVENING